



A Unique Stem Applied Capsule for Management of Eutypa in Grapes.

What is StemCap GN2™ Plus?

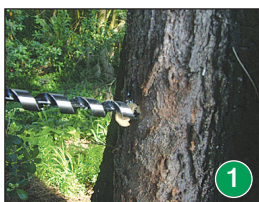
- Is a unique stem applied capsule formulation for the management of Eutypa.
- Because *Eutypa Lata* affected vines have a reduced ability to take up and utilize nutrients, StemCap **GN2 Plus™** is formulated with a proprietary blend of nutrients to aid the restoration of vine health.
- Symptomatic vines can be easily identified during the spring and summer months. Treat the affected vines with StemCap **GN2 Plus™** immediately or if preferred after harvest.

What is *Eutypa Lata*?

- *Eutypa Lata*, known as “Dead arm Disease” is a very destructive disease of grapevines.
- The fungus is more prevalent where rainfall is likely to exceed 600mm p.a.
- Worst affected are grapevines, however the fungus will also attack pipfruit, stonefruit, poplars, willows and numerous other deciduous trees.

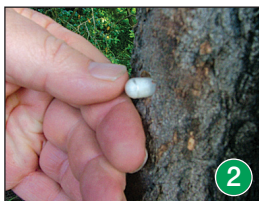
Symptoms:

- Spores of *Eutypa Lata* invade the vine via pruning wounds and slowly colonize “woody” tissue.
- During this invasion, expect foliage to be starved of vital nutrients. Infected vines have a yellowed, stunted and distorted appearance due to various toxins growing in brown-stained wood.
- An invasion of woody tissue progresses, foliar symptoms become even more severe. This leads to a decline in productivity and may ultimately cause vine death.



Drill:

Using an auger type drill bit, drill the hole in the main stem to a depth of 80 to 90% of the stem diameter. Drill holes in areas of healthy wood, usually this is in the lower stem of the vine, just above ground level.



Place:

Insert the required number of StemCaps as shown below. For more information see the StemCap **GN2 Plus™** product label.

2 caps	3 caps	4 caps	5 caps
up to 80mm	80 to 110mm	110 to 130mm	130 to 150



Plug:

Insert a StemPLUG to close the drill hole. Strike the StemPLUG firmly using a small hammer to ensure a good seal.

Application:

- 1 Cut and train:** The trunk is cut off 10-20 cm below any signs of brown Eutypa staining and a new basal shoot is trained. This maintains the existing rootstock. Yield will be zero until a new canopy becomes established.
- 2 Train and cut:** A healthy shoot is selected from the base of the trunk and trained up. The infected trunk is not removed until the new shoot is producing.



For more information on the techniques outlined above please contact your StemCap **GN2 Plus™** specialist.

Talk to us. It pays.



Omnia Specialities Australia Pty Ltd

Reception: +61 3 5133 9118

Facsimile: +61 3 5133 9114

www.australianhumates.com info@omnia.net.au

Proudly Australian made

